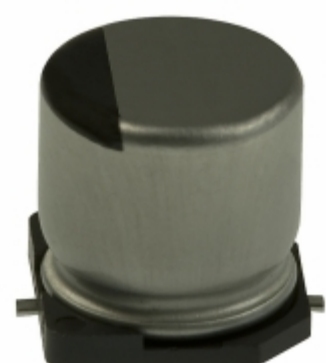


EEE-HA0J102P



Images are for reference only.
See Product Specifications for product details.
Buy EEE-HA0J102P with confidence from Component-World.HK, 1 Year Warranty

Panasonic

Part Number: [EEE-HA0J102P](#)
Manufacturer: [Panasonic Electronic Components](#)
Description: CAP ALUM 1000UF 20% 6.3V SMD
Data sheet: [Aluminum Electrolytic Cap Part Numbering](#)
[EEE-HA Series, Type V](#)

RoHS Status: Lead free / RoHS Compliant
Ship From: Hong Kong
Shipment Way: DHL/Fedex/TNT/UPS/EMS

[Request For Quotation](#)

PRODUCT PARAMETER

| | | | |
|---|---|---|--|
| Part Number | EEE-HA0J102P | Manufacturer | Panasonic Electronic Components |
| Description | CAP ALUM 1000UF 20% 6.3V SMD | Lead Free Status / RoHS Status | Lead free / RoHS Compliant |
| Quantity Available | 406494 pcs | Data sheet | Aluminum Electrolytic Cap Part Numbering System EEE-HA Series, Type V |
| Category | Capacitors | Tolerance | 1000µF |
| Surface Mount Land Size | - | Size / Dimension | 0.394" Dia (10.00mm) |
| Series | HA | RoHS Status | Tape & Reel (TR) |
| Ripple Current - Low Frequency | Automotive | Ripple Current | Polar |
| Polarization | Radial, Can - SMD | Pitch - Connector | 6.3V |
| Package / Case | 0.406" L x 0.406" W (10.30mm x 10.30mm) | Other Names | EEEHA0J102P PCE4157TR |
| Operating Temperature | -40°C ~ 105°C | Number of Capacitors | 400mA @ 120Hz |
| Mounting Type | Surface Mount | Moisture Sensitivity Level (MSL) | 1 (Unlimited) |
| Manufacturer Standard Lead Time | 18 Weeks | Manufacturer Part Number | EEE-HA0J102P |
| Lifetime @ Temp. | - | Impedance | - |
| Height - Seated (Max) | 0.402" (10.20mm) | Expanded Description | 1000µF 6.3V Aluminum Capacitors Radial, Can - SMD 1000 Hrs @ 105°C |
| ESR (Equivalent Series Resistance) | ±20% | Description | CAP ALUM 1000UF 20% 6.3V SMD |
| Applications | 1000 Hrs @ 105°C | | |

Component-World.com is a Reliable Stocking Distributor of Electronic Components. We specialize in all Panasonic series electronic components. We have 406494 pieces of Panasonic EEE-HA0J102P in stock available now. Request a quote from electronics components distributor at Component-World.com, our sales team will contact you within 24 hours.

RFQ Email: info@Components-World.com

RELATED PRODUCTS

| | | | |
|--|---|---|---------------------|
| | Part#: EEE-FTH101XAP Description: CAP ALUM 100UF 20% 50V SMD | Manufacturers: Panasonic | RFQ |
| | Part#: EEE-FTV151XAP Description: CAP ALUM 150UF 20% 35V SMD | Manufacturers: Panasonic | RFQ |
| | Part#: EEE-HA0J101WR Description: CAP ALUM 100UF 20% 6.3V SMD | Manufacturers: Panasonic | RFQ |
| | Part#: EEE-HA0J220AR Description: CAP ALUM 22UF 20% 6.3V SMD | Manufacturers: Panasonic | RFQ |
| | Part#: EEE-HA0J331XP Description: CAP ALUM 330UF 20% 6.3V SMD | Manufacturers: Panasonic | RFQ |
| | Part#: EEE-FTJ681XAP Description: CAP ALUM 680UF 20% 6.3V SMD | Manufacturers: Panasonic | RFQ |
| | Part#: EEE-HA0J221WP Description: CAP ALUM 220UF 20% 6.3V SMD | Manufacturers: Panasonic | RFQ |
| | Part#: EEE-HA0J101AP Description: CAP ALUM 100UF 20% 6.3V SMD | Manufacturers: Panasonic | RFQ |
| | Part#: EEE-HA0J330WR Description: CAP ALUM 33UF 20% 6.3V SMD | Manufacturers: Panasonic | RFQ |
| | Part#: EEE-FTE221XAP Description: CAP ALUM 220UF 20% 25V SMD | Manufacturers: Panasonic | RFQ |
| | Part#: EEE-HA0J101P Description: CAP ALUM 100UF 20% 6.3V SMD | Manufacturers: Panasonic | RFQ |
| | Part#: EEE-HA0J220R Description: CAP ALUM 22UF 20% 6.3V SMD | Manufacturers: Panasonic | RFQ |
| | Part#: EEE-FTH100UAR Description: CAP ALUM 10UF 20% 50V SMD | Manufacturers: Panasonic | RFQ |
| | Part#: EEE-HA0J152P Description: CAP ALUM 1500UF 20% 6.3V SMD | Manufacturers: Panasonic | RFQ |
| | Part#: EEE-HA0J470AR Description: CAP ALUM 47UF 20% 6.3V SMD | Manufacturers: Panasonic | RFQ |
| | Part#: EEE-HA0J102UP Description: CAP ALUM 1000UF 20% 6.3V SMD | Manufacturers: Panasonic | RFQ |
| | Part#: EEE-HA0J331P Description: CAP ALUM 330UF 20% 6.3V SMD | Manufacturers: Panasonic | RFQ |
| | Part#: EEE-FTJ471XAP Description: CAP ALUM 470UF 20% 6.3V SMD | Manufacturers: Panasonic | RFQ |
| | Part#: EEE-HA0J331AP Description: CAP ALUM 330UF 20% 6.3V SMD | Manufacturers: Panasonic Electronic Components | RFQ |
| | Part#: EEE-HA0J102AP Description: CAP ALUM 1000UF 20% 6.3V SMD | Manufacturers: Panasonic | RFQ |

Related keywords for EEE-HA0J102P

| | | | |
|---|--|---|--|
| Panasonic EEE-HA0J102P | EEE-HA0J102P distributor | EEE-HA0J102P supplier | EEE-HA0J102P price |
| EEE-HA0J102P download datasheet | EEE-HA0J102P datasheet | EEE-HA0J102P stock | buy EEE-HA0J102P |
| Panasonic EEE-HA0J102P | Panasonic - Consumer Division EEE-HA0J102P | Panasonic - Consumer Electronics Corp. EEE-HA0J102P | Panasonic Battery Group EEE-HA0J102P |
| Panasonic Electronic Components - Semiconductor Pr EEE-HA0J102P | Panasonic - ATG EEE-HA0J102P | Panasonic - BSG EEE-HA0J102P | Panasonic Electric Works - ACSD EEE-HA0J102P |
| | Panasonic Electric Works EEE-HA0J102P | Panasonic Electronic Components EEE-HA0J102P | Panasonic - DTG EEE-HA0J102P |
| | | | Panasonic Industrial Automation Sales EEE-HA0J102P |
| Panasonic Semiconductor EEE-HA0J102P | | | |

